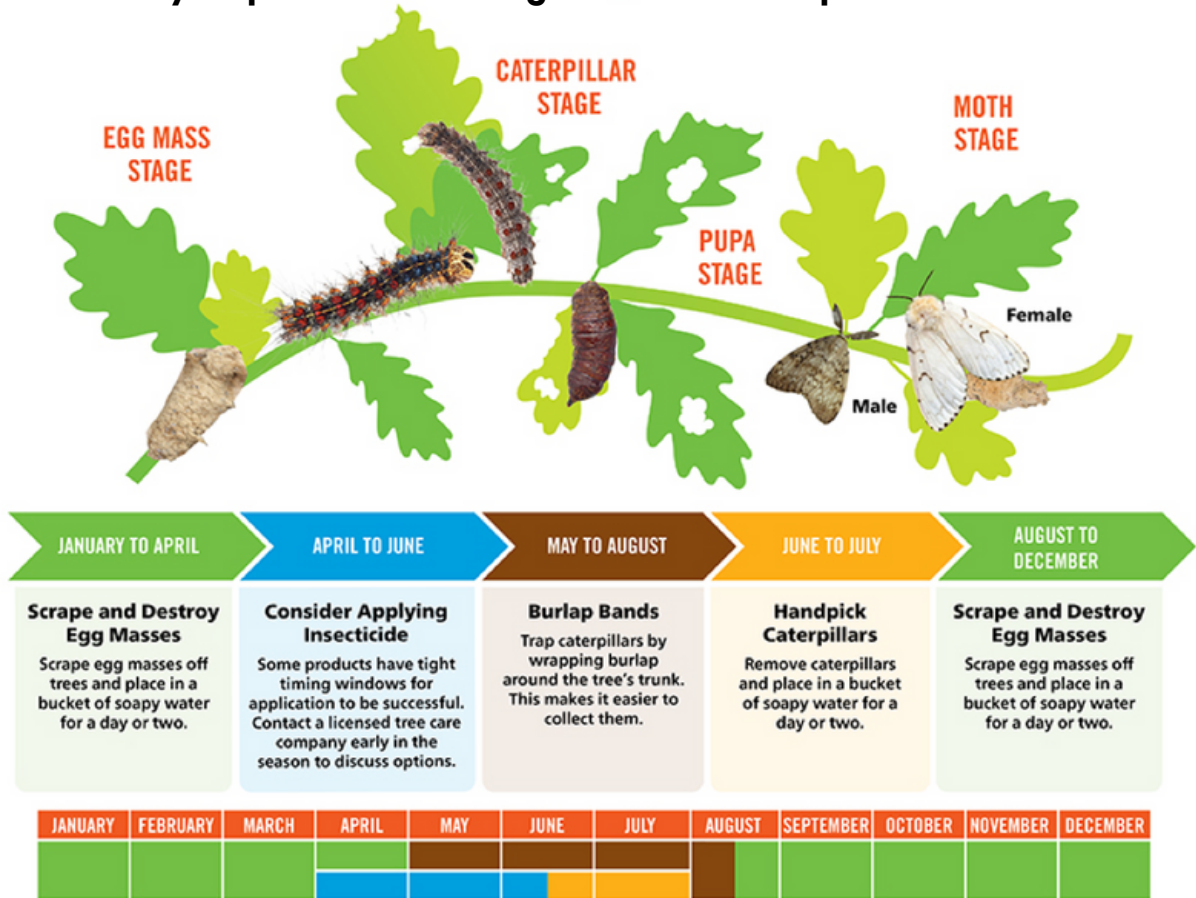


# Root wisdom

## Spongy Moth



Spongy Moth caterpillars are voracious eaters, feeding on the leaves of deciduous trees, and soft needled conifers. Depending on their numbers, they can defoliate entire forests in a few weeks! Most healthy trees can rejuvenate after this damage, but controlling the egg masses and caterpillars is very helpful in eliminating this destructive pest.



Resource: <https://www.king.ca/spongymoth>

## Natural Control

Wrap a piece of burlap around the trunk. Secure it with string at the mid-point.

Allow the top half to fold over the string.

Caterpillars will hide out from the sun and become trapped.

Drop the captured caterpillars into a bucket of soapy water.



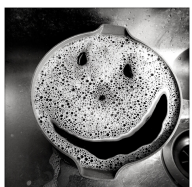
step #1



step #2



step #3



step #4